

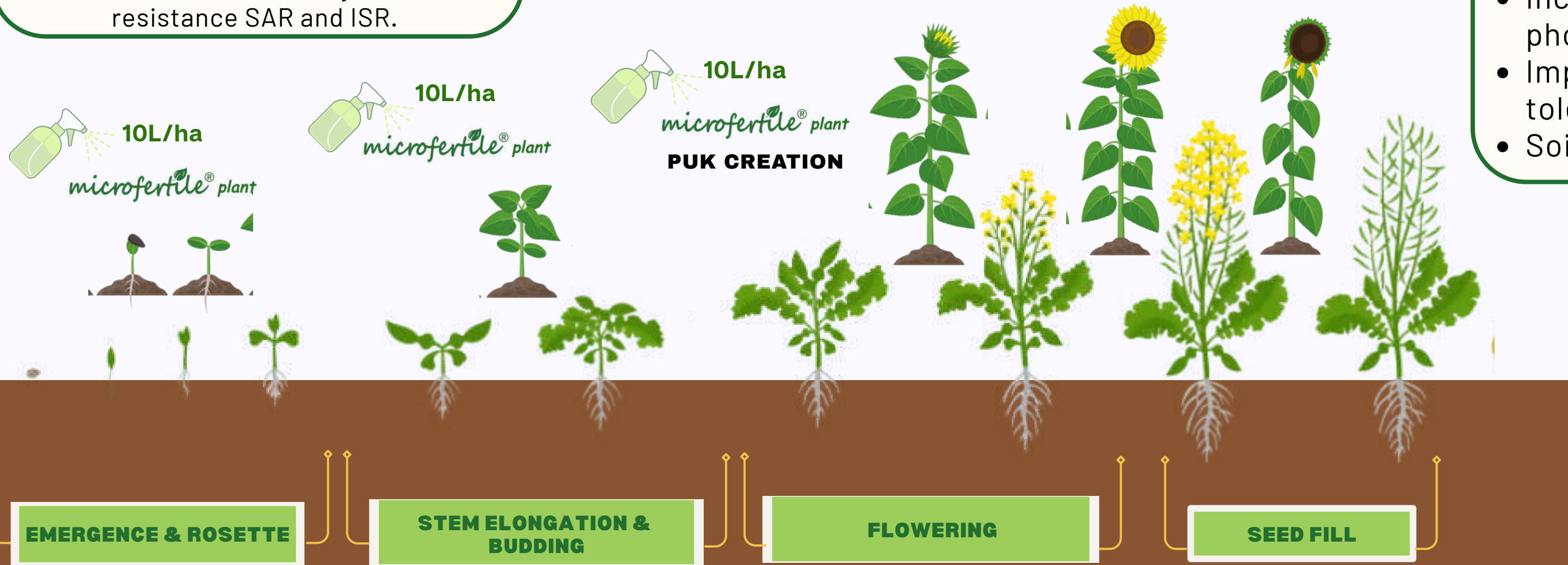
APPLICATION

OILSEEDS

PRODUCT	TIMING	MODE OF ACTION	CONCENTRATION	FREQUENCY
microfertile[®] plant	4th to 6th, 6th to 8th leaf phase; at the beginning of spring growth until stem growth and during bud formation	Increases yield, growth, increases chlorophyll, vitality and cold resistance	10 L / ha	3 foliar applications
ekofertile[®] plant	As needed approximately 1-2 weeks before the expected drought, or when buds form.	Improves resistance to stress (UV radiation, drought, diseases)	5 L / ha	1 foliar application

- Observed effects:**
- Higher seed yield
 - Increased root vitality and development
 - Improved flowering and seed setting
 - Extended and better seed filling, heavier seeds
 - Increased oil content
 - Improved water use efficiency
 - Increased nitrogen and phosphorus use efficiency
 - Improved heat and drought tolerance
 - Soil regeneration

Do not apply before expected rain, min. 8 hours for absorption, 10-30°C, apply after rain to activate systemic resistance SAR and ISR.



Includes:
Canola,
Rapeseed,
Peanut